



knürr
World of control rooms

KNÜRR® MOBILE EQUIPMENT CARRIERS

Universal Cart Systems
Ergonomic. Modular. Future-Proof



KNÜRR MOBILE
EQUIPMENT CARRIERS

| | |
|------------------------|----|
| • Mobility In Practice | 2 |
| • Knürr® DacoMobile | 4 |
| • Knürr® MetraMobil | 20 |
| • Accessories | 28 |
| • Individual solution | 35 |

Mobility In Practice

MODULAR &
INDUSTRIAL
SOLUTIONS

Whether for the electronics laboratory, in the logistics and in the automotive sector, our extensive standard range provides diverse solutions for the safe and secure mobility of valuable equipment. Our modular designs enable versatile cart configurations, immediately or at any time later on. For demanding ESD environments Knürr provides various cart systems – ranging from robust transport trolleys through to the fully equipped measurements and diagnostics cart.

Ergonomic details also simplify daily tasks in a wide range of environments. An extensive range of accessories supplements Knürr’s mobile equipment carriers as requested by the customer: Flat screen holders, ESD castors, isolating transformers and leakage detectors, cable routing elements and other practical accessories.



MOB20131



MET 20000



MOB20096



Mobile Equipment Carriers

Knürr® DacoMobile

Page 4 to 19



Knürr® DacoMobile

Strong points

• Stability

- Total load rating of up to 2100 N
- Worktops each with up to 800 N load rating
- High stability with low-lying centre of gravity
- Distributed load drawer extension up to 200 N
- Torsional strength with stable aluminium extrusions on die-cast aluminium stabilizers and crosspiece of sheet steel
- Optimal stability for equipment set up in the trolley with raised edges all around the worktop

• Convenience

- Optimised operation with additional module components, such as
 - Cable duct
 - Rear panel
 - Euro mains distributor
 - Master switch
 - Socket strip

- Ergonomically optimal adjustment with
 - Keyboard extension
 - Pull-out shelves
- Effortless management of obstacles and uneven floors with Ø 125 mm large smooth-running castors
- Positioning with 2 lockable castors
- No marks and scratches on the doors, panels and fittings due to the integrated plastic bumper cap

• Variability

- Standard and ESD model components
- Modular designs enable numerous individual models
- Versatile applications ranging from the simple storage trolley to the complex laboratory station
- Simple and quick adjustment without special tools



MOB20095



MOB20053



MOB20096



MOB00274

Dimensions in mm: W = Width
 H = Height
 D = Depth
 h = Installation height
 d = Useful depth
 L = Length

HU = Standard height unit, 1 HU = 44,45 mm
 19" = 482,6 mm, (ideal for 19" components in acc. with DIN 41494)
 UP = Unit of packaging
 kg = Weight

Conversion: 1 inch = 25,4 mm
 Replace „x“ with the number of your color choice

P = assemble to order (shipped within 10 working days)

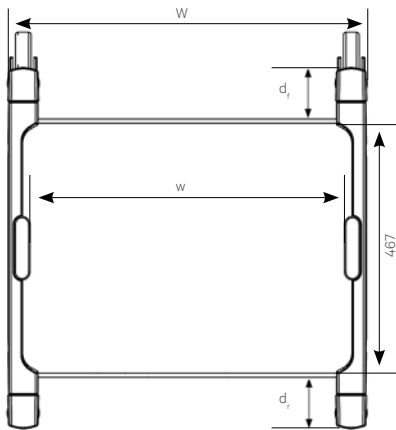
Caution: In case of larger orders, delivery times may increase.

Knürr® DacoMobile system components
Technical data

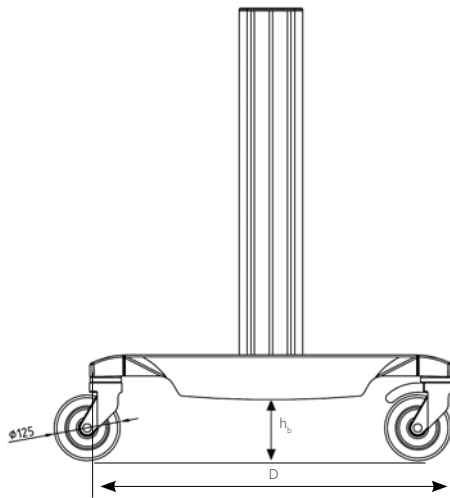
- Modules can be installed in 50 mm increments in height
- Smooth-running castors, Ø 125 mm, two with stoppers
- **Material**
 - Basic rack consists of:**
 - Extrusions: extruded aluminum
 - Runners: die-cast aluminum
 - Crosspiece: sheet steel
 - Worktop:**
 - sheet steel
 - Other modules:**
 - combination of sheet steel with laminated particle board, or sheet steel.
- **Finish**
 - Metal parts:**
 - powder-coated texture
 - Laminated sheet:**
 - fine-textured
- **Color**
 - Extrusions, runners, castors:**
 - RAL 5003, sapphire blue or RAL 7021 ESD or RAL 7035, light grey
 - Modules:**
 - RAL 7035, light grey
 - ESD castors:**
 - black
- **Maximum static load rating**
 - Per basic rack:**
 - 2,100 N
 - Per castor:**
 - 750 N
 - Surface load per worktop:**
 - up to 800 N
- **How supplied**
 - Fully assembled



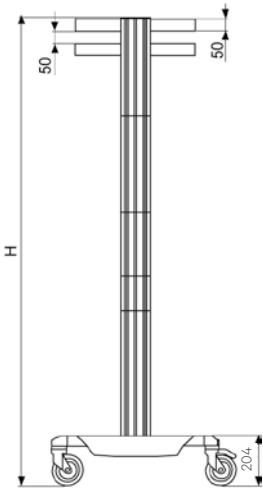
MOB20051



MOB20076



MOB20077



MOB20035

Installation position of the Knürr® DacoMobile elements in 50 mm increments, measured from above.

| | | |
|--------|-----|-----|
| W (mm) | 600 | 700 |
| w (mm) | 496 | 596 |

D = 680 mm
h_b = 120 mm
d_f = 97 mm
d_r = 97 mm

Knürr® DacoMobile 1515

- **Material**
 - Worktops – sheet steel
 - Handle(s) – aluminum extrusion
 - Base unit crosspiece – sheet steel
- **Dimensions**
 - Height 1,515 mm
- **Color**
 - RAL 5003, sapphire blue /
 - RAL 7035, light grey
- **Supply schedule**
 - 1 basic rack
 - 2 handles
 - 4 worktops
- **How supplied**
 - Partially assembled

| W | H | D | w | Order no. | UP |
|-----|------|-----|-----|--------------|--------|
| 700 | 1515 | 685 | 596 | 00.106.628.2 | 1 unit |



MOB20097

Mobile ESD-Measuring and Analysis Station

- **Color combination**
 - Worktop, RAL 7035, light grey
 - Extrusions and stabilizer, RAL 7021 black grey
- **Castor – Ø 125 mm**
- **Load rating**
 - Basic rack:**
 - 2,100 N
 - Per castor:**
 - 750 N
 - Surface load per worktop:**
 - 800 N
- **Material / Finish**
 - Basic rack consists of:**
 - Extrusions: extruded aluminum
 - Rockers: die-cast aluminum, powder-coated;
- Sliding handle – aluminum extrusion
- Base unit crosspiece – sheet steel
- Drawer unit, sheet steel
- Table top, sheet steel
- **Supply schedule**
 - 1 ESD-basic rack
 - 2 ESD-worktop
 - 1 ESD-drawer
 - 1 ESD-handle
- **How supplied**
 - Assembled

| W | H | D | w | d | Order no. | UP |
|-----|-----|-----|-----|-----|--------------|--------|
| 700 | 860 | 685 | 596 | 490 | 00.115.620.9 | 1 unit |



MOB20098

Dimensions in mm: W = Width
 H = Height
 D = Depth
 h = Installation height
 d = Useful depth
 L = Length

HU = Standard height unit, 1 HU = 44,45 mm
 19" = 482,6 mm,
 (ideal for 19" components in acc. with DIN 41494)
 UP = Unit of packaging
 kg = Weight

Conversion: 1 inch = 25,4 mm

Replace „x“ with the number of your color choice

Knürr® DacoMobile Basic Rack

Finish

Replace „x“ with the number of your color choice.

Final digit of order number .1:

- Vertical extrusions, die-cast aluminium runners RAL 7035 light grey
- Bottom frame cover RAL 7035 light grey
- Castors, bumper-caps and end-caps black

Final digit of order number .2:

- Vertical extrusions, die-cast aluminium runners RAL 5003 sapphire blue
- Bottom frame cover RAL 7035 light grey
- Castors, bumper-caps and end-caps black
- RAL 5003 sapphire blue

ESD finish .9:

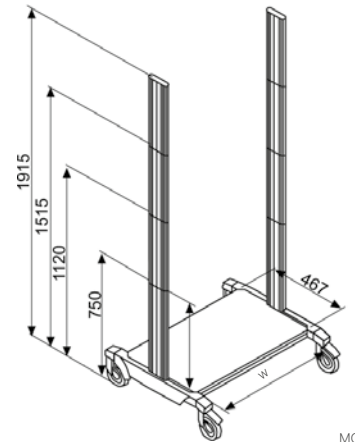
- Vertical extrusions, die-cast aluminum runners RAL7021 black grey, ESD bottom cover RAL 7035, light grey, ESD Conductive castors, impact protection caps and end-caps, black

Supply schedule

- 1 bottom cover made of sheet steel
- 2 die-cast aluminum runners with plastic bumper caps
- 4 smooth-running castors – Ø 125 mm, 2 with snib
- 2 vertical aluminum extrusions with threaded strips for mounting the modules

Design your own individual equipment carrier as follows:

1. Choose ESD or Standard
2. Select a width
3. Select the height of the basic rack
4. Choose the appropriate accessories on the following pages



MOB20034

| W | H | w | ESD | Order no. | UP |
|-----|------|-----|-----|--------------|--------|
| 600 | 750 | 496 | | 00.101.505.x | 1 unit |
| 600 | 750 | 496 | • | 00.101.614.9 | 1 unit |
| 700 | 750 | 596 | | 00.101.605.x | 1 unit |
| 700 | 750 | 596 | • | 00.101.615.9 | 1 unit |
| 600 | 1120 | 496 | | 00.103.505.x | 1 unit |
| 600 | 1120 | 496 | • | 00.103.614.9 | 1 unit |
| 700 | 1120 | 596 | | 00.103.605.x | 1 unit |
| 700 | 1120 | 596 | • | 00.103.615.9 | 1 unit |
| 600 | 1515 | 496 | | 00.104.505.x | 1 unit |
| 600 | 1515 | 496 | • | 00.104.614.9 | 1 unit |
| 700 | 1515 | 596 | | 00.104.605.x | 1 unit |
| 700 | 1515 | 596 | • | 00.104.615.9 | 1 unit |
| 600 | 1915 | 496 | | 00.105.505.x | 1 unit |
| 600 | 1915 | 496 | • | 00.105.614.9 | 1 unit |
| 700 | 1915 | 596 | | 00.105.605.x | 1 unit |
| 700 | 1915 | 596 | • | 00.105.615.9 | 1 unit |



MOB00333

Knürr® DacoMobile Cable Duct Large

- With convenient hinged cover with two quicklocks
- Separate cable routing via mounting strip
- Cable exit via sealing lips at any height
- Can be mounted left or right

Material

- Sheet steel, powder-coated RAL 7035, light grey, antistatic
- ESD: RAL 7021, black-grey, antistatic

Supply schedule

- 1 cable duct
- Mounting material

| W | H | D | ESD | Order no. | UP |
|----|------|-----|-----|--------------|--------|
| 85 | 1120 | 190 | | 00.118.014.1 | 1 unit |
| 85 | 1515 | 190 | | 00.118.015.1 | 1 unit |
| 85 | 1915 | 190 | | 00.118.016.1 | 1 unit |
| 85 | 1120 | 190 | • | 00.118.214.9 | 1 unit |
| 85 | 1515 | 190 | • | 00.118.215.9 | 1 unit |
| 85 | 1915 | 190 | • | 00.118.216.9 | 1 unit |



MOB20057

Knürr® DacoMobile Castor Set

- Load capacity: 750 N per castor – ø 125 mm
- **Color**
 - **Standard castors:**
 - RAL 5003, sapphire blue
 - **ESD:**
 - Black
- **Supply schedule**
 - 4 smooth-running castors
 - 2 with stopper

| ESD | Order no. | UP |
|-----|---------------------|--------|
| | 00.128.965.2 | 1 unit |
| • | 00.128.975.9 | 1 unit |



MOB20067

Knürr® DacoMobile Worktop

- **Material**
 - Sheet steel, powder-coated
- **Color**
 - RAL 7035, light grey
- **ESD version:**
 - RAL 7035, light grey, ESD
- **Supply schedule**
 - 1 worktop
 - Mounting material
- **Note**
 - Please order handle and anti-slide mats separately.

| H | D | w | Model | ESD | Order no. | UP |
|----|-----|-----|------------------|-----|---------------------|--------|
| 50 | 490 | 496 | Sheet steel | | 00.101.530.1 | 1 unit |
| 50 | 490 | 596 | Sheet steel | | 00.101.630.1 | 1 unit |
| 50 | 490 | 496 | Sheet steel, ESD | • | 00.101.540.1 | 1 unit |
| 50 | 490 | 596 | Sheet steel, ESD | • | 00.101.640.1 | 1 unit |



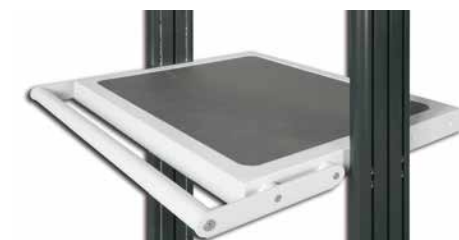
version: sheet steel

MOB20071

Knürr® DacoMobile Worktop Handle

- For sheet steel worktops
- Can be mounted from front and/or rear
- **Material**
 - Sheet steel
 - Aluminum extrusion handle
- **Color**
 - RAL 7035, light grey
- **ESD:**
 - RAL 7021, dark grey, antistatic
- **Supply schedule**
 - 1 handle
 - 2 mounting brackets
 - Mounting material

| w | Model | ESD | Order no. | UP |
|-----|-------------------------------|-----|---------------------|--------|
| 496 | Dacomobile worktop handle | | 00.101.045.1 | 1 unit |
| 596 | Dacomobile worktop handle | | 00.101.050.1 | 1 unit |
| 496 | Dacomobile worktop handle ESD | • | 00.101.145.1 | 1 unit |
| 596 | Dacomobile worktop handle ESD | • | 00.101.150.1 | 1 unit |



MOB20070

Dimensions in mm: W = Width
H = Height
D = Depth
h = Installation height
d = Useful depth
L = Length

HU = Standard height unit, 1 HU = 44,45 mm
19" = 482,6 mm,
(ideal for 19" components in acc. with DIN 41494)
UP = Unit of packaging
kg = Weight

Conversion: 1 inch = 25,4 mm
Replace „x“ with the number of your color choice

Tiltable Mounting Plate

- Universal mounting plate. Can be mounted in three different angle positions
- Maximum static surface load: 20kg

Material

Sheet-steel, powder-coated

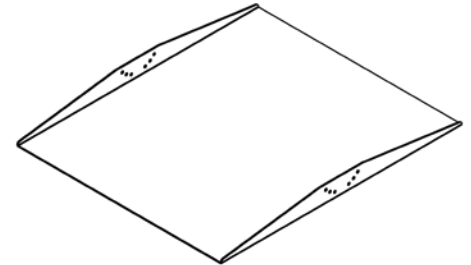
Finish

- RAL 7035 light grey

Supply schedule

- 1 mounting plate
- Mounting material

| D | w | Order no. | UP |
|-----|-----|--------------|--------|
| 600 | 496 | 00.101.134.1 | 1 unit |
| 600 | 596 | 00.101.135.1 | 1 unit |
| 700 | 496 | 00.101.137.1 | 1 unit |
| 700 | 596 | 00.101.138.1 | 1 unit |



MOB20132

Knürr® DacoMobile Cross Extrusion

- For cross-bracing the basic rack with heavy components or with high carts

Material

- Sheet steel, powder-coated

Finish

Final digit of order number .1:

- RAL 7035 light grey

Final digit of order number .2:

- RAL 5003 sapphire blue

Final digit of order number .9:

- ESD version, RAL 7021 black grey ESD

Supply schedule

- 1 cross extrusion
- Mounting material

| w | Model | ESD | Order no. | UP |
|-----|------------------|-----|--------------|--------|
| 496 | Sheet steel | | 00.122.510.X | 1 unit |
| 596 | Sheet steel | | 00.122.611.X | 1 unit |
| 496 | Sheet steel, ESD | • | 00.122.510.9 | 1 unit |
| 596 | Sheet steel, ESD | • | 00.122.611.9 | 1 unit |



MOB20063

Knürr® DacoMobile Telescopic shelf

- ESD or standard version
- Shelf with telescopic slides
- Locking in closed an extended position
- Maximum static load: 22kg

Material

- Sheet steel, powder-coated
- Tray handle – plastic

Color

- Extension board, RAL 7035 light grey, antistatic
- Standard tray handle, RAL 7035 light grey
- ESD handle, black

Supply schedule

- 1 Telescopic shelf, pre-assembled
- Mounting material

| H | D | w | Model | ESD | Order no. | UP |
|----|-----|-----|------------------|-----|--------------|--------|
| 50 | 490 | 496 | Sheet steel | | 00.125.525.2 | 1 unit |
| 50 | 490 | 596 | Sheet steel | | 00.125.625.2 | 1 unit |
| 50 | 490 | 496 | Sheet steel, ESD | • | 00.125.530.1 | 1 unit |
| 50 | 490 | 596 | Sheet steel, ESD | • | 00.125.630.1 | 1 unit |



MOB20050

Dimensions in mm:

W = Width

H = Height

D = Depth

h = Installation height

d = Useful depth

L = Length

HU = Standard height

unit, 1 HU = 44,45 mm

19"= 4826 mm,

(ideal for 19" components

in acc. with DIN 41494)

UP = Unit of packaging

kg = Weight

Conversion:

1 inch = 25,4 mm

Replace „x“ with the number of your color choice

Knürr® DacoMobile Keyboard Extension Closed

- ESD or standard version
 - Closed sheet steel carcass
 - Main unit cover recessed for optional anti-slide mats
 - Extension board with telescopic slides
 - Mouse table can be moved to the left or right with or without lock
 - Maximum static load for telescopic shelf: 10kg
- **Material**
 - Sheet steel, powder-coated
 - Tray handle – plastic
- **Color**
 - Main unit, extension board, mouse table: RAL 7035, light grey, antistatic
 - Standard tray handle, RAL 7035, light grey
 - ESD handle, black
 - **Supply schedule**
 - 1 keyboard extension, closed, with mouse table
 - Mounting material

| H | D | w | Model | ESD | Order no. | UP |
|-----|-----|-----|----------|-----|--------------|--------|
| 100 | 490 | 496 | With loc | | 00.127.516.2 | 1 unit |
| 100 | 490 | 596 | With loc | | 00.127.616.2 | 1 unit |
| 100 | 490 | 496 | With loc | • | 00.127.526.1 | 1 unit |
| 100 | 490 | 596 | With loc | • | 00.127.626.1 | 1 unit |



MOB20074

Knürr® DacoMobile Drawer Module

- ESD or standard version
 - With or without lock
 - Height – 100 or 150 mm
 - Sheet steel main unit
 - Main unit cover with depression for optional anti-slide mats
 - Maximum static load: 10 kg for drawer 20 kg for corpus
- **Material**
 - Sheet steel, powder-coated
 - Tray handle – plastic
- **Color**
 - Main unit, drawer: RAL 7035, light grey, antistatic
 - Tray handle: Standard RAL 7035, light grey
 - ESD handle: Black
 - **Supply schedule**
 - 1 drawer module
 - Mounting material

| H | D | w | Model | ESD | Order no. | UP |
|-----|-----|-----|-----------|-----|--------------|--------|
| 100 | 490 | 496 | With lock | | 00.117.536.2 | 1 unit |
| 100 | 490 | 596 | With lock | | 00.117.616.2 | 1 unit |
| 100 | 490 | 496 | With lock | • | 00.117.526.1 | 1 unit |
| 100 | 490 | 596 | With lock | • | 00.117.626.1 | 1 unit |
| 150 | 490 | 496 | With lock | | 00.117.538.2 | 1 unit |
| 150 | 490 | 596 | With lock | | 00.117.618.2 | 1 unit |
| 150 | 490 | 496 | With lock | • | 00.117.528.1 | 1 unit |
| 150 | 490 | 596 | With lock | • | 00.117.628.1 | 1 unit |



MOB20072



MOB20073

Knürr® DacoMobile Storage Tray

- Tray for paper, cables or small parts
 - Height 80 mm
 - With perforation Ø 8 mm
- **Material**
 - Sheet steel, powder-coated
- **Color**
 - RAL 7035, light grey, antistatic
 - **Supply schedule**
 - 1 storage tray
 - Mounting material

| H | D | w | Model | ESD | Order no. | UP |
|----|-----|-----|-------|-----|--------------|--------|
| 80 | 490 | 496 | ESD | • | 00.111.512.1 | 1 unit |
| 80 | 490 | 596 | ESD | • | 00.111.612.1 | 1 unit |



MOB20068

Knürr® DacoMobile Mounting Kit, Fixed
For 19" DoubleProRack Enclosures

- Installation option for two different enclosure depths in the basic rack
 - Maximum static load rating, 800 N
 - Only for Knürr DacoMobile width 600 mm!
 - Only for Knürr DoubleProRack Enclosure Width 600; depth 500 mm, 600 mm, 700 mm
- **Supply schedule**
 - 1 pair of mounting brackets
 - **Note**

More information on 'DoubleProRack':

 - www.pdb.knuerr.com

| W | H | D | Order no. | UP |
|---|---|-----|--------------|--------|
| | | 500 | 00.101.130.1 | 1 unit |
| | | 600 | 00.101.131.1 | 1 unit |
| | | 700 | 00.101.132.1 | 1 unit |



MOB20067

Spacer set for DoubleProRack

- Recommended for DoubleProRack enclosures, mounted in DacoMobile trolley to stabilize the enclosure
- **Supply schedule**
 - 2x spacer 20mm length
 - 2x Cylinder head screw M6x60
 - 2x Spring nut M6
 - 2x Star washer 6.4mm
- **Material**
 - Aluminium extrusion, powder-coated RAL 7035 light grey

| W | H | D | Order no. | UP |
|---|---|---|--------------|--------|
| | | | 00.101.016.1 | 1 unit |



MOB20082



MOB20133



MOB20134

Knürr® DoubleProRack 19" Stand-alone Enclosure

Description

- For components compliant with IEC 297-3
- Side covers and rear panel may be removed
- Flexible assembly of components using T-slot (also available with mounting holes)
- Cable entry via rear panel
- Heat loss discharge via convection on the rear panel (optional with fan unit)

Jumpering space

- Front 125 mm

Load rating

- 1500 N static

Protection rating

- IP 20

Material / Finish

- Covers, sheet steel, powder-coated texture
- Die-cast aluminum frame
- Extruded aluminum extrusions
- Front door glass infill, single safety glass panel

Color

- Panels RAL 7035 light grey
- Frame and extrusions, RAL 5008, grey-blue

Scope of delivery

- 1 x frame rack incl. side covers
- 1 x full glass door
- 1 x rear panel with cable entry, 3 parts
- 1 x panel, above, with vent slots
- 1 x panel, below, with vent slots
- 1 x 19" component set (4 vertical extrusions with T-slot)
- 1 x grounding set with M8 grounding bolt

How supplied

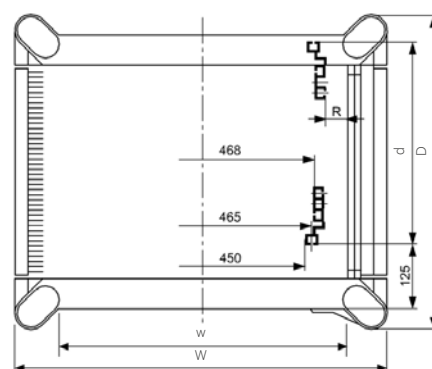
- Assembled

Note

- When using a DoublePro rack in combination with a DacoMobile, we recommend to choose the DacoMobile in color combination .1 (light grey)



DOP00256



DOP00230

| W | H | D | U | h | d (max.) | Model | Order no. | UP |
|-------|------|-----|----|------|----------|----------------------|---------------------|--------|
| 554.4 | 577 | 600 | 12 | 532 | 435 | With full glass door | 01.246.643.1 | 1 unit |
| 554.4 | 711 | 600 | 15 | 666 | 435 | With full glass door | 01.246.644.1 | 1 unit |
| 554.4 | 844 | 600 | 18 | 799 | 435 | With full glass door | 01.246.645.1 | 1 unit |
| 554.4 | 978 | 600 | 21 | 932 | 435 | With full glass door | 01.246.646.1 | 1 unit |
| 554.4 | 1111 | 600 | 24 | 1066 | 435 | With full glass door | 01.246.647.1 | 1 unit |

Dimensions in mm: W = Width
H = Height
D = Depth
h = Installation height
d = Useful depth
L = Length

HU = Standard height unit, 1 HU = 44,45 mm
19" = 482,6 mm, (ideal for 19" components in acc. with DIN 41494)
UP = Unit of packaging
kg = Weight

Conversion: 1 inch = 25,4 mm
Replace „x“ with the number of your color choice

Knürr® DoubleProRack 19" Enclosure without Front Door

Description

- For components compliant with IEC 297-3
- Side covers and rear panel may be removed
- Heat loss discharge via convection on the rear panel (optional with fan unit)

Load rating

- 1500 N static

Protection rating

- IP 20

Material / Finish

- Covers, sheet steel, powder-coated texture
- Die-cast aluminum frame
- Extruded aluminum extrusions

Color

- Panels RAL 7035 light grey
- Frame and extrusions, RAL 5008, greyblue

Scope of delivery

- 1 x frame rack incl. side covers
- 1 x panel, above, with vent slots
- 1 x panel, below, with vent slots
- 1 x rear panel (from 12 U enclosure height incl. 3 U vented cover plate)
- 2 x 19" extrusions, front, with mounting holes
- 2 x 19" extrusions at the rear, T-slot

How supplied

- Assembled

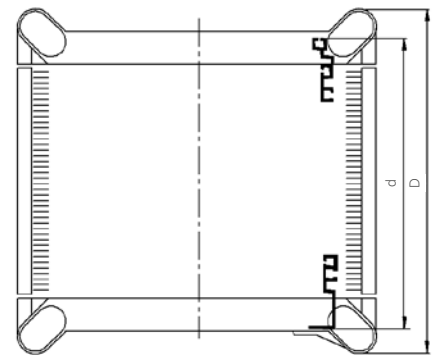
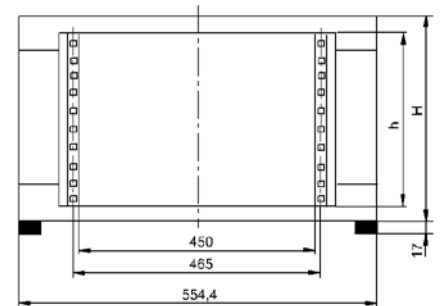
Note

- When using a DoublePro rack in combination with a DacoMobile, we recommend to choose the DacoMobile in color combination .1 (light grey)



DOP00253

| W | H | D | U | h | d (max.) | Kg | Model | Order no. | UP |
|-------|------|-----|----|------|----------|------|--------------|---------------------|--------|
| 554.4 | 311 | 500 | 6 | 265 | 460 | 12.5 | Without door | 01.243.506.1 | 1 unit |
| 554.4 | 444 | 500 | 9 | 399 | 460 | 15.0 | Without door | 01.243.509.1 | 1 unit |
| 554.4 | 577 | 500 | 12 | 532 | 460 | 17.0 | Without door | 01.243.512.1 | 1 unit |
| 554.4 | 711 | 500 | 15 | 666 | 460 | 19.5 | Without door | 01.243.515.1 | 1 unit |
| 554.4 | 311 | 600 | 6 | 265 | 560 | 14.0 | Without door | 01.243.606.1 | 1 unit |
| 554.4 | 444 | 600 | 9 | 399 | 560 | 16.5 | Without door | 01.243.609.1 | 1 unit |
| 554.4 | 577 | 600 | 12 | 532 | 560 | 19.0 | Without door | 01.243.612.1 | 1 unit |
| 554.4 | 711 | 600 | 15 | 666 | 560 | 22.0 | Without door | 01.243.615.1 | 1 unit |
| 554.4 | 844 | 600 | 18 | 799 | 560 | 24.5 | Without door | 01.243.618.1 | 1 unit |
| 554.4 | 978 | 600 | 21 | 932 | 560 | 27.0 | Without door | 01.243.621.1 | 1 unit |
| 554.4 | 1111 | 600 | 24 | 1066 | 560 | 29.5 | Without door | 01.243.624.1 | 1 unit |
| 554.4 | 577 | 700 | 12 | 532 | 660 | 21.5 | Without door | 01.243.712.1 | 1 unit |
| 554.4 | 711 | 700 | 15 | 666 | 660 | 24.0 | Without door | 01.243.715.1 | 1 unit |
| 554.4 | 844 | 700 | 18 | 799 | 660 | 27.0 | Without door | 01.243.718.1 | 1 unit |
| 554.4 | 978 | 700 | 21 | 932 | 660 | 29.5 | Without door | 01.243.721.1 | 1 unit |
| 554.4 | 1111 | 700 | 24 | 1066 | 660 | 32.5 | Without door | 01.243.724.1 | 1 unit |



DOP00052

Dimensions in mm: W = Width
H = Height
D = Depth
h = Installation height
d = Useful depth
L = Length

HU = Standard height unit, 1 HU = 44.45 mm
19" = 482.6 mm, (ideal for 19" components in acc. with DIN 41494)
UP = Unit of packaging
kg = Weight

Conversion: 1 inch = 25.4 mm
Replace „x“ with the number of your color choice

Knürr® DoubleProRack

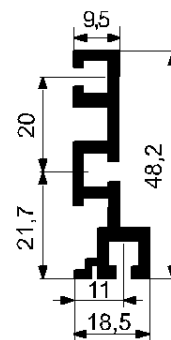
19" Installation, Front with T-slot

- Can also be used as second mounting level
- **Material**
 - Aluminum extrusions
- **Finish**
 - Polished
- **Scope of delivery**
 - 2 x 19" extrusions at the front, T-slot
 - 1 x Mounting kit
- **How supplied**
 - In sets

| U | Order no. | UP |
|----|--------------|-------|
| 6 | 01.240.440.9 | 1 set |
| 9 | 01.240.443.9 | 1 set |
| 12 | 01.240.445.9 | 1 set |
| 15 | 01.240.446.9 | 1 set |
| 18 | 01.240.447.9 | 1 set |
| 21 | 01.240.448.9 | 1 set |
| 24 | 01.240.449.9 | 1 set |



DOP20004



DOP00313

Knürr® DoubleProRack

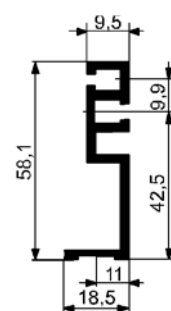
19" Installation, Front with Mounting Holes

- Can also be used as second mounting level
- **Material**
 - Extruded aluminum extrusions
- **Finish**
 - Polished
- **Scope of delivery**
 - 2 x 19" extrusions at the front, mounting holes
- **How supplied**
 - In sets

| U | Order no. | UP |
|----|--------------|-------|
| 6 | 01.240.490.9 | 1 set |
| 9 | 01.240.493.9 | 1 set |
| 12 | 01.240.495.9 | 1 set |
| 15 | 01.240.496.9 | 1 set |
| 18 | 01.240.497.9 | 1 set |
| 21 | 01.240.498.9 | 1 set |
| 24 | 01.240.499.9 | 1 set |



DOP20005



DOP00055

Knürr® DoubleProRack

Fan Rear Panel 3 U

- With axial fans
- With thermostat
- **Technical data for single fan**
 - Max. volume flow (free blowing):**
 - 162 m³/h
 - Noise emission (free blowing):**
 - 37 dB(A)
- **Technical data for thermostat**
 - Setting range:**
 - 0 to 60°C
 - Mains supply:**
 - 240 V / 50 Hz
 - Nominal current:**
 - 16 A
- **Scope of delivery**
 - 1 x fan rear panel, wired
 - 1 x Mounting kit
- **Finish / Color**
 - Powder-coated texture, RAL 7035 light grey
- **How supplied**
 - Assembled
- **Note**
 - Cannot be used in the enclosure's lowest U



DOP20035



DOP20036

| W | H | U | Model | Order no. | UP |
|-------|-------|---|-----------------|--------------|--------|
| 554.4 | 132.5 | 3 | With thermostat | 01.243.428.1 | 1 unit |

Knürr® DoubleProRack Rear Panel, closed

- For DoubleProRack width 554.4 mm
- **Material / Finish**
 - Sheet steel, 0.8 mm, powder-coated texture
- **Color**
 - RAL 7035, light grey

- **Scope of delivery**
 - 1 x rear panel, closed
 - 1 x Mounting kit
- **How supplied**
 - In sets

| W | U | Order no. | UP |
|-------|----|--------------|--------|
| 554.4 | 6 | 01.240.454.1 | 1 unit |
| 554.4 | 9 | 01.240.457.1 | 1 unit |
| 554.4 | 12 | 01.240.459.1 | 1 unit |
| 554.4 | 15 | 01.240.460.1 | 1 unit |
| 554.4 | 18 | 01.240.461.1 | 1 unit |
| 554.4 | 21 | 01.240.462.1 | 1 unit |



DOP00275

Knürr® DoubleProRack Connection Panel with Brush Strip

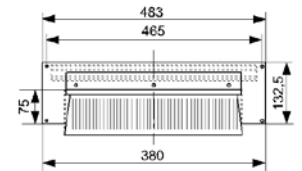
- To cover rear panel along with the corresponding rear panel shortened by 3 U
- For DoubleProRack width 554.4 mm
- With brush strip for cable routing and strain relief
- **Finish / Color**
 - Powder-coated texture, RAL 7035 light grey

- **Scope of delivery**
 - 1 x connection plate
 - 1 x Mounting kit
- **How supplied**
 - In sets

| W | H | U | Order no. | UP |
|-------|-------|---|--------------|--------|
| 554.4 | 132.5 | 3 | 01.243.438.1 | 1 unit |



DOP00274



DOP00288

Grounding Bar

- For safe grounding or potential equalization of equipment and components
- **Material**
 - Electrolyte copper 9 x 9

- **Scope of delivery**
 - 1 x grounding bar
 - 2 x brackets
 - 1 x Mounting kit

| U | Order no. | UP |
|----|--------------|--------|
| 12 | 01.110.703.9 | 1 unit |
| 21 | 01.240.545.9 | 1 unit |



ELM00068

Knürr® DoubleProRack Grounding Set for Enclosures

- For grounding top/bottom cover
- With central grounding bolt
- 2 x washers
- 4 x cylinder screws, M5 x 10
- 1 x grounding bolt
- **Scope of delivery**
 - 2 x grounding connections, length 250 mm
 - 4 x spring nuts, M5
- **How supplied**
 - In sets

| Order no. | UP |
|--------------|-------|
| 01.243.400.9 | 1 set |



MEC20122

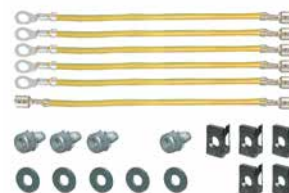


DOP20025

Knürr® DoubleProRack Grounding Set for Doors and Trims

- For grounding doors and/or cover plates
- 5 x cylinder screws, M5 x 10 with tooth-lock washer
- 5 x washers
- **Scope of delivery**
 - 5 x grounding connections, length 250 mm
 - 1 x grounding connection, 250 mm, two-sided AMP plug
 - 5 x spring nuts, M5
- **How supplied**
 - In sets

| Order no. | UP |
|--------------|-------|
| 01.245.400.9 | 1 set |



MEC20123



DOP00286

Contact Clamp

- Enables safe connection of equipment and components to grounding bar
- For cables up to 25 mm
- **Scope of delivery**
 - 120 x contact clamps

| Order no. | UP |
|--------------|----------|
| 01.110.715.9 | 20 units |



DOP20016

Dimensions in mm: W = Width
 H = Height
 D = Depth
 h = Installation height
 d = Useful depth
 L = Length

HU = Standard height unit, 1 HU = 44.45 mm
 19" = 482.6 mm, (ideal for 19" components in acc. with DIN 41494)
 UP = Unit of packaging
 kg = Weight

Conversion: 1 inch = 25.4 mm

Replace „x“ with the number of your color choice

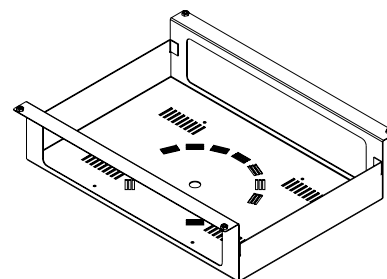
ESD mounting set for isolating transformer

- Tray: Mount on underside of base unit
- Secure fixing of the isolating transformers
- With ventilation perforations
- **Material**
 - Sheet steel, powder-coated
- **Color**
 - RAL 7035, light grey, antistatic
- **Supply schedule**
 - 1 mounting set
 - Mounting material
- **Note**
 - **Only for Knürr Dacomobile:**
W 696 mm, w 596 mm

| W | H | D | Model | Order no. | UP |
|-----|-----|-----|-------|--------------|--------|
| 520 | 120 | 350 | Tray | 00.101.262.1 | 1 unit |



MOB20064



Knürr® DacoMobile Master Switch Module

- For mounting on the vertical extrusions
- With lit on/off switch, white
- Pre-wired with H05VV-F3G cable, 1.5 mm²
- Sheet steel, powder-coated
- **Color**
 - **Standard:**
 - RAL 7035, light grey, antistatic
- **Supply schedule**
 - 1 master switch module
 - Mounting material

| W | H | D | Order no. | UP |
|----|----|----|--------------|--------|
| 40 | 76 | 90 | 00.118.001.1 | 1 unit |



MOB20048

Knürr® DacoMobile Rubber Mat

- **Material**
 - Self-adhesive rubber-mat made of open pore sponge rubber
- **Colour**
 - Standard: grey, ESD: black

| W | w | Model | ESD | Order no. | UP |
|-----|-----|---|-----|--------------|--------|
| 600 | 496 | Standard, for sheet-steel table top and drawer unit top | | 00.101.195.0 | 1 unit |
| 700 | 596 | Standard, for sheet-steel table top and drawer unit top | | 00.101.200.9 | 1 unit |
| 600 | 496 | Standard, for sheet-steel keyboard extension open | | 00.101.196.0 | 1 unit |
| 700 | 596 | Standard, for sheet-steel keyboard extension open | | 00.101.202.9 | 1 unit |
| 600 | 496 | ESD, for sheet-steel tabletop and drawer unit top | • | 00.101.198.0 | 1 unit |
| 700 | 596 | ESD, for sheet-steel tabletop and drawer unit top | • | 00.101.208.9 | 1 unit |
| 600 | 496 | ESD, for sheet-steel keyboard extension open | • | 00.101.199.0 | 1 unit |
| 700 | 596 | ESD, for sheet-steel keyboard extension open | • | 00.101.210.9 | 1 unit |



MOB00298

Dimensions in mm: W = Width
H = Height
D = Depth
h = Installation height
d = Useful depth
L = Length

HU = Standard height unit, 1 HU = 44.45 mm
19" = 482.6 mm,
(ideal for 19" components in acc. with DIN 41494)
UP = Unit of packaging
kg = Weight

Conversion: 1 inch = 25.4 mm
Replace „x“ with the number of your color choice

Knürr® DacoMobile 19"

- **Color**
 - RAL 5003, sapphire blue / RAL 7035 light grey
- **Supply schedule**
 - 1 Basic rack
 - 1 Cross extrusion
- **How supplied**
 - 2 19" Extrusions
 - 10 Chassis runners
 - Part assembled

| W | H | D | HU/U | h | Order no. | UP |
|-----|------|-----|------|------|--------------|--------|
| 606 | 1865 | 685 | 36 | 1600 | 01.316.016.2 | 1 unit |
| 606 | 2000 | 685 | 39 | 1733 | 01.316.019.2 | 1 unit |



MOB00402

Knürr® DacoMobile Chassis Runner Set For mounting 19" equipment

- **Material**
 - Sheet steel, zinc passivated
- **Supply schedule**
 - 2 Chassis runners
 - Mounting material
- **Dimensions**
 - Length:**
 - 200 mm
 - Thickness:**
 - 2 mm
 - Angle bracket:**
 - 44 x 50 mm

| W | H | D | Order no. | UP |
|----|----|-----|--------------|--------|
| 50 | 44 | 200 | 01.316.026.7 | 1 unit |



MOB00336

Mobile Equipment Carriers

Knürr® MetraMobil

Page 20 to 27



Knürr® MetraMobil

Strong points

• Variability

- A completely individual cart can be configured from a basic frame in 2 heights, 3 colors and 5 module components.
- Ideal height adjustment with variable height setting of the shelves

• Stability

- High load rating:
up to 600 N per worktop
up to 2200 N for full trolley
- Distributed load drawer extension up to 100 N
- High stability with advanced sheet steel construction

• Functionality

- Suitable for the most varied areas of application: PC or printer station, IT-cart, logistics or laboratory

• Cable management

- Safe cable routing with two cable ducts integrated in the extrusion
- Clear and orderly cable management with integration of accessory parts, e.g. a socket strip, which can be mounted on the extrusion.

• Well-thought out solutions

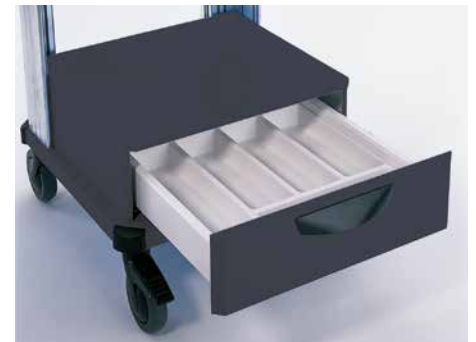
- Vision and contact protection provided by the easy "on-off" rear panel, no tools needed
- Orderly arrangement of small material with drawer module with removeable small parts tray
- Smooth running 3/4 pull-out "Quattro" guide

• ESD versions

- Safety and protection in demanding ESD environments provided by ESD castors and ESD powder coating.



MET 20000



MET00034



MET00003



MET00037

Knürr® MetraMobil Basic Configurations

- Replace „x“ with the number of your color choice.
- **Final digit of order number .1:**
 - Worktops, RAL 7035, light grey
 - Extrusions, RAL 9006, white aluminium
 - Handle, RAL 9011, graphite black
- **Final digit of order number .9:**
 - Worktops, RAL 7016, anthracite grey
 - Extrusions, RAL 9006, white aluminium
 - Handle, RAL 9011, graphite black
- **ESD versions:**
Note: ESD only in color variant .1 (light grey)
Final digit of order number .1:
 Worktops, RAL 7035, antistatic light grey
 Extrusions, RAL 9006, white aluminium
 Handle, RAL 7021, dark grey, antistatic
- **Design your individual trolley as follows:**
 1. Select height of the basic trolley
 2. Select ESD or standard model
 3. Pick out additional modules
- The basic model can be easily expanded with system components (bear ESD in mind!)
- Worktops: set at any height
- **Dimensions**
 - Height, 900 mm or 1120 mm
 - Full width, 550 mm
 - Useful width, 500 mm
- **Depth, 580 mm**
 - Useful depth, 440 mm
 - Castor Ø 125 mm
- **Load rating**
Basic rack:
 - 2200 N**Per castor:**
 - 750 N**Surface load per worktop:**
 - 600 N
- **Material/Finish**
Basic rack consists of:
 - Extrusions: extruded aluminium, powder-coated
 - Worktops: sheet steel, powder-coat textured**Handle:**
 - aluminium tube, powder-coat textured
- **Supply schedule, Basic Configuration**
 - a. Height 900 mm**
 - 1 Basic rack
 - 1 Worktop with handle
 - 1 Worktop
 - b. Height 1120 mm**
 - 1 Basic rack
 - 1 Worktop with handle
 - 2 Worktops
- **Supply schedule Metramobil Light**
 - 1 Basic rack
 - 1 Worktop with handle
- **How supplied**
 - Modules for self installation



Metramobil Basic height 1120 mm

MET00018



Metramobil Basic height 900 mm

MET00014



Metramobil light

MET20008

| W | H | D | w | d | Model | ESD | Order no. | UP |
|-----|------|-----|-----|-----|------------------|-----|--------------|--------|
| 550 | 900 | 580 | 500 | 440 | | | 00.709.000.x | 1 unit |
| 550 | 900 | 580 | 500 | 440 | | • | 00.709.100.1 | 1 unit |
| 550 | 900 | 580 | 500 | 440 | Metramobil light | | 00.709.200.x | 1 unit |
| | | | | | | | | 1 unit |
| 550 | 1120 | 580 | 500 | 440 | | | 00.711.000.x | 1 unit |
| 550 | 1120 | 580 | 500 | 440 | | • | 00.711.100.1 | 1 unit |
| 550 | 1120 | 580 | 500 | 440 | Metramobil light | | 00.711.200.x | 1 unit |

Dimensions in mm: W = Width
 H = Height
 D = Depth
 h = Installation height
 d = Useful depth
 L = Length

HU = Standard height unit, 1 HU = 44,45 mm
 19" = 482,6 mm,
 (ideal for 19" components in acc. with DIN 41494)
 UP = Unit of packaging
 kg = Weight

Conversion: 1 inch = 25,4 mm

Replace „x“ with the number of your color choice

Knürr® MetraMobil 900

- Replace „x“ with the number of your color choice.
- **Final digit of order number .1:**
 - Worktops, RAL 7035, light grey
 - Extrusions, RAL 9006, white aluminium
 - Handle, RAL 9011, graphite black
- **Final digit of order number .9:**
 - Worktops, RAL 7016, anthracite grey
 - Extrusions, RAL 9006, white aluminium
 - Handle, RAL 9011, graphite black
- Worktops: set at any height
- Castor: Ø 125 mm
- **Load rating**
 - **Basic rack:**
 - 2200 N
 - **Per castor:**
 - 750 N
 - **Surface load per worktop:**
 - 600 N
- **Material/Finish**
 - **Basic rack consists of:**
 - Extrusions: extruded aluminium, powder-coated
 - Worktops: sheet steel, powder-coat textured
 - **Handle:**
 - aluminium tube, powder-coat textured
- **Supply schedule**
 - 1 Basic rack
 - 1 Worktop with handle
 - 1 Worktop
 - 1 Keyboard extension with mouse table
- **How supplied**
 - Modules for self installation



MET00058

| W | H | D | w | d | Order no. | UP |
|-----|-----|-----|-----|-----|--------------|--------|
| 550 | 900 | 580 | 500 | 440 | 00.709.002.x | 1 unit |

Knürr® MetraMobil 1120

- Replace „x“ with the number of your color choice.
- **Final digit of order number .1:**
 - Worktops, RAL 7035, light grey
 - Extrusions, RAL 9006, white aluminium
 - Handle, RAL 9011, graphite black
- **Final digit of order number .9:**
 - Worktops, RAL 7016, anthracite grey
 - Extrusions, RAL 9006, white aluminium
 - Handle, RAL 9011, graphite black
- Worktops: set at any height
- Castor: Ø 125 mm
- **Load rating**
 - **Basic rack:**
 - 2200 N
 - **Per castor:**
 - 750 N
 - **Surface load per worktop:**
 - 600 N
- **Material/Finish**
 - **Basic rack consists of:**
 - Extrusions: extruded aluminium, powder-coated
 - Worktops: sheet steel, powder-coat textured
 - **Handle:**
 - aluminium tube, powder-coat textured
- **Supply schedule**
 - 1 Basic rack
 - 1 Worktop with handle
 - 2 Worktops
 - 1 Keyboard extension with mouse table
- **How supplied**
 - Modules for self installation



MET00060

| W | H | D | w | d | Order no. | UP |
|-----|------|-----|-----|-----|--------------|--------|
| 550 | 1120 | 580 | 500 | 440 | 00.711.002.x | 1 unit |

Knürr® MetraMobil 1120 with drawer module

- Replace „x“ with the number of your color choice.
- **Final digit of order number .1:**
 - Worktops, RAL 7035, light grey
 - Extrusions, RAL 9006, white aluminium
 - Handle, RAL 9011, graphite black
 - **Final digit of order number .9:**
 - Worktops, RAL 7016, anthracite grey
 - Extrusions, RAL 9006, white aluminium
 - Handle, RAL 9011, graphite black
- Worktops: set at any height
- Castor: Ø 125 mm
- **Load rating**
 - **Basic rack:**
 - 2200 N
 - **Per castor:**
 - 750 N
 - **Surface load per worktop:**
 - 600 N
- **Material/Finish**
 - **Basic rack consists of:**
 - Extrusions: extruded aluminium, powder-coated
 - Worktops: sheet steel, powder-coat textured
 - **Handle:**
 - aluminium tube, powder-coat textured
- **Supply schedule**
 - 1 Basic rack
 - 1 Worktop with handle
 - 2 Worktops
 - 1 Drawer module
- **How supplied**
 - Modules for self installation

| W | H | D | w | d | Order no. | UP |
|-----|------|-----|-----|-----|--------------|--------|
| 550 | 1120 | 580 | 500 | 440 | 00.711.004.x | 1 unit |



MET00017

Dimensions in mm: W = Width
H = Height
D = Depth
h = Installation height
d = Useful depth
L = Length
HU = Standard height unit, 1 HU = 44,45 mm
19" = 482,6 mm, (ideal for 19" components in acc. with DIN 41494)
UP = Unit of packaging
kg = Weight

Conversion: 1 inch = 25,4 mm
Replace „x“ with the number of your color choice

Knürr® MetraMobil Worktop

- Replace „x“ with the number of your color choice.
- **Standard versions:**
 - Final digit of order number .1:**
 - RAL 7035 light grey
 - Final digit of order number .9:**
 - RAL 7016 anthracite grey
- **ESD version:**
 - Note: ESD only in color variant .1 (light grey)**
 - Final digit of order number .1:**
 - RAL 7035 anti-static, light grey
- For storage and work purposes
- Variable setting between the vertical extrusions

ESD model in accordance with EN 100015

- **Supply schedule**
 - 1 Worktop
 - Mounting material
- **How supplied**
 - Flat-packed kit

| W | H | D | Model | ESD | Order no. | UP |
|-----|----|-----|-------------|-----|--------------|--------|
| 500 | 25 | 440 | | | 00.701.020.x | 1 unit |
| 500 | 25 | 440 | | • | 00.701.120.1 | 1 unit |
| 500 | 25 | 440 | with handle | | 00.701.021.x | 1 unit |
| 500 | 25 | 440 | with handle | • | 00.701.121.1 | 1 unit |



MET00014

Knürr® MetraMobil Anti-Slide Mat Set

Note:
Anti-slide mats are not possible at the same time with keyboard extension!

- Consists of 4 anti-slide mats
- For slide-proof storage of parts to be transported
- As scratch protection for the worktop
- **Material**
 - Industrial rubber, self-adhesive
- **Color**
 - Black
- **Supply schedule**
 - 4 Anti-slide mats
- **How supplied**
 - Flat-packed kit
- **Antistatic version**
 - Consisting of four anti-slip mats, antistatic, self-adhesive
- **Material**
 - Industrial rubber, antistatic
- **Color**
 - Black

| W | H | D | Antistatic | Order no. | UP |
|-----|---|-----|------------|--------------|--------|
| 475 | | 430 | | 00.701.070.9 | 1 unit |
| 475 | | 430 | • | 00.701.170.9 | 1 unit |



MET00040

Knürr® MetraMobil Keyboard Extension

- Replace „x“ with the number of your color choice.
 - **Standard versions:**
 - Final digit of order number .1:**
 - RAL 7035 light grey
 - Final digit of order number .9:**
 - RAL 7016 anthracite grey
 - **ESD version:**
 - Note: ESD only in color variant .1 (light grey)**
 - Final digit of order number .1:**
 - RAL 7035 anti-static, light grey
 - For mounting on Knürr MetraMobil worktop and worktop with handle
 - With side mouse table, left/right
 - Extension 200 mm
- ESD model in accordance with EN 100015**
- **Supply schedule**
 - 1 Keyboard extension
 - Mounting material
 - **How supplied**
 - Flat-packed kit
 - **Note**
 - With worktop with keyboard extension, an anti-slide mat is not possible!



MET00035

| W | H | D | ESD | Order no. | UP |
|-----|----|-----|-----|---------------------|--------|
| 505 | 45 | 200 | | 00.701.060.x | 1 unit |
| 505 | 45 | 200 | • | 00.701.160.1 | 1 unit |

Knürr® MetraMobil Drawer Module

- Replace „x“ with the number of your color choice.
 - **Standard versions:**
 - Final digit of order number .1:**
 - RAL 7035 light grey
 - Final digit of order number .9:**
 - RAL 7016 anthracite grey
 - **ESD version:**
 - Note: ESD only in color variant .1 (light grey)**
 - Final digit of order number .1:**
 - RAL 7035 anti-static, light grey
 - For holding small material
 - Including divider set
 - **Material/Finish**
 - Sheet steel, powder-coat textured
- ESD model in accordance with EN 100015**
- **Supply schedule**
 - 1 Drawer module
 - Mounting material
 - **How supplied**
 - Flat-packed kit



MET00017

| W | H | D | ESD | Order no. | UP |
|-----|-----|-----|-----|---------------------|--------|
| 500 | 165 | 440 | | 00.701.001.x | 1 unit |
| 505 | 165 | 440 | • | 00.701.101.1 | 1 unit |

Dimensions in mm: W = Width
H = Height
D = Depth
h = Installation height
d = Useful depth
L = Length

HU = Standard height unit, 1 HU = 44,45 mm
19" = 482,6 mm,
(ideal for 19" components in acc. with DIN 41494)
UP = Unit of packaging
kg = Weight

Conversion: 1 inch = 25,4 mm

Replace „x“ with the number of your color choice

Knürr® MetraMobil Rear Panel

- Replace „x“ with the number of your color choice.
- **Standard versions:**
 - Final digit of order number .1:**
 - RAL 7035 light grey
 - Final digit of order number .9:**
 - RAL 7016 anthracite grey
- **ESD version:**
 - Note: ESD only in color variant .1 (light grey)**
 - Final digit of order number .1:**
 - RAL 7035 anti-static, light grey
- With cable entry
- ESD model in accordance with EN 100015
- **Material/Finish**
 - Sheet steel, powder-coat textured
- **Supply schedule**
 - 1 Rear panel
 - Mounting material
- **How supplied**
 - Flat-packed kit

| W | H | D | ESD | Order no. | UP |
|-----|------|---|-----|--------------|--------|
| 380 | 900 | | | 00.701.010.x | 1 unit |
| 380 | 1120 | | | 00.701.011.x | 1 unit |
| 380 | 900 | | • | 00.701.110.1 | 1 unit |
| 380 | 1120 | | • | 00.701.111.1 | 1 unit |



MET00033

Knürr® MetraMobil Cable Management Set

- **Consists of:**
 - Di-Strip socket strip, 4-way, without switch
 - Strain relief
 - Two cable reel elements
- **Supply schedule**
 - 1 Cable management set
 - Mounting material
- **How supplied**
 - Flat-packed kit

| Order no. | UP |
|--------------|--------|
| 00.701.050.1 | 1 unit |



MET00037

Knürr® MetraMobil Castor Set

- Load rating, 750 N per castor, Ø 125 mm
- **Color**
 - RAL 9011, graphite black
- **Supply schedule**
 - 4 smooth-running castors,
 - 2 with brake

| ESD | Order no. | UP |
|-----|--------------|--------|
| | 00.701.965.9 | 1 unit |
| • | 00.128.975.9 | 1 unit |



MET00021

Mobile Equipment Carriers

Accessories

(for DacoMobile and MetraMobil)

Page 28 to 31



Spring nuts M5 and M6

- For clipping into T-slots at any position
 - For mounting chassis rails and other components
- **Material**
 - Steel, St 1203
 - Spring band, Nirosta 4310
 - **Supply schedule**
 - 50 spring nuts

| W | H | D | Model | Order no. | UP |
|---|---|---|-------|--------------|--------|
| | | | M6 | 01.350.405.9 | 1 unit |
| | | | M5 | 01.350.431.9 | 1 unit |



MEC00060

Antistatic Castor Set

- Load capacity – 90 kg
- **Color**
 - RAL 9011, graphite black
- **Supply schedule**
 - 4 smooth-running castors
 - 2 with brake

| Type | Color | Diameter | Order no. | UP |
|------|-------|----------|--------------|--------|
| ESD | Black | 125 | 00.128.975.9 | 1 unit |



MOB20083

Dimensions in mm: W = Width
 H = Height
 D = Depth
 h = Installation height
 d = Useful depth
 L = Length

HU = Standard height
 unit, 1 HU = 44,45 mm
 19"= 482,6 mm,
 (ideal for 19" components
 in acc. with DIN 41494)
 UP = Unit of packaging
 kg = Weight

Conversion: 1 inch = 25,4 mm
 Replace „x“ with the number of your
 color choice

Cable routing set
Mounting on the vertical extrusions

- Material
 - Plastic
- Color
 - RAL 7035, light grey
- Supply schedule
 - 1 cable routing set
 - Mounting material

| W | H | D | Order no. | UP |
|---|-----|---|--------------|--------|
| | 500 | | 00.101.001.9 | 1 unit |



MOB00331

Cable Winder
For up to 5 m of cable

- Material
 - Plastic
- Color
 - RAL 7035 light grey
- Supply schedule
 - 2 Cable winders
 - Mounting material

| W | H | D | Order no. | UP |
|---|---|---|--------------|--------|
| | | | 00.306.957.1 | 1 unit |



MOB00338

Isolating Transformers

NTC: For switch-on peak limit are NTCs in the input power circuit before the transformer.

Basis of EC Declaration of Conformity in acc. with Directive 93/42 EEC, Annex I:

- EN60601-1, EN60601-1-1
- EN60601-1-1-2 (EMC)
- EN14971
- Supply schedule
 - 1 isolating transformer
 - 1 mains cable, 2.5 m with protective contact plug
- How supplied
 - Flat-packed kit
- Note
 - Further versions and leakage detectors on request

| W | H | D | Switch-on current limiter | Type | Power (W) | Order no. | UP |
|-----|-----|-----|---------------------------|------------|-----------|--------------|--------|
| 286 | 110 | 312 | NTC | IMed 2000E | 2000 | 00.100.842.9 | 1 unit |



MOB20099

Side Shelf

For Knürr DacoMobile and Knürr EliMobil

- **Material**
 - Laminated 3-layer particle board
 - Folding brackets: sheet steel
 - Finish: RAL 7035 light grey
- **Delivery Schedule**
 - 1 side shelf
 - 1 set of folding brackets
 - Mounting hardware

| W | H | D | Order no. | UP |
|-----|---|-----|--------------|--------|
| 300 | | 400 | 00.101.250.1 | 1 unit |



MOB20053

Multi-Functional Extrusions for Flat Screen Supports

- For mounting between the Knürr Mobile vertical extrusions
- Sturdy and stable Knürr TFT Adapter connection
- **Note**
 - TFT adapters are not included in the supply schedule, please order separately
- **Material**
 - Extruded aluminum extrusions
 - Sheet steel mounting plates
- **Finish**
 - Metal parts – powder-coated, RAL 9006, white aluminum
- **How supplied**
 - Flat-packed kit
- **Supply schedule**
 - 2 Funktional rails
 - Mounting material

| W | Model | Order no. | UP |
|-----|-------------------|--------------|--------|
| 496 | Knürr® DacoMobile | 00.101.007.9 | 1 unit |
| 596 | Knürr® DacoMobile | 00.101.008.9 | 1 unit |
| 500 | Knürr® MetraMobil | 00.701.055.9 | 1 unit |



MOB20061

Dimensions in mm: W = Width
 H = Height
 D = Depth
 h = Installation height
 d = Useful depth
 L = Length

HU = Standard height
 unit, 1 HU = 44.45 mm
 19" = 482.6 mm,
 (ideal for 19" components
 in acc. with DIN 41494)
 UP = Unit of packaging
 kg = Weight

Conversion: 1 inch = 25.4 mm
 Replace „x“ with the number of your
 color choice

Right from the very beginning

PROJECT MANAGEMENT

Take advantage of our expert knowledge, which we have been gathering for decades in numerous customer projects in various industries.

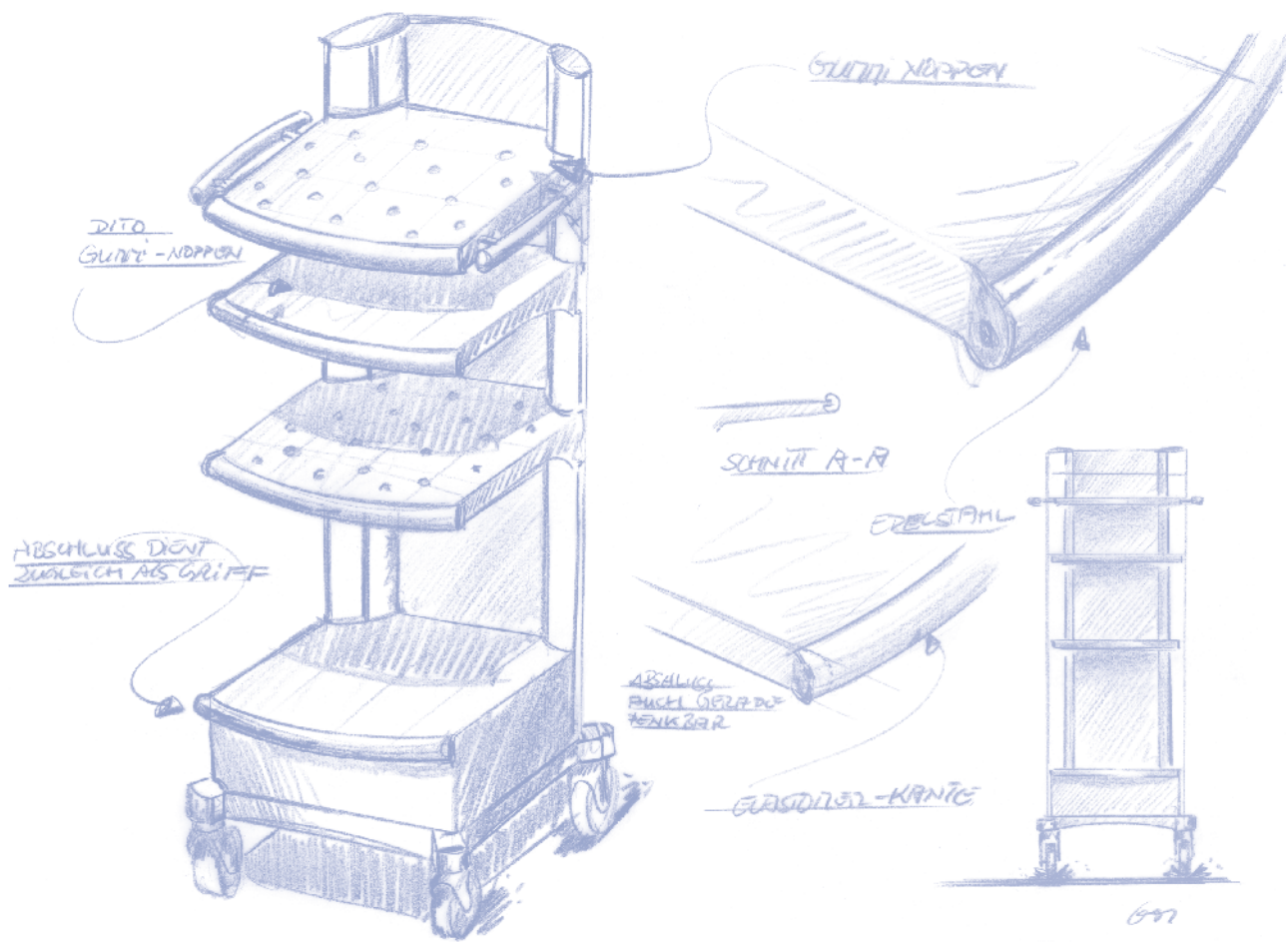
Our **project managers** are your contact partners. They are the interface to you and are responsible for the project planning in accordance with your individual requirements profile. Depending on the complexity of the task at hand, they put together a **professional team** of specialists from the most diverse disciplines. Numerous factors are incorporated – from the creation of a list of functional specifications, budgeting and deadline

planning, through to special design specifications and technical integration, right on through to compliance with standards and guidelines.

During the **product design** phase, industrial designers and technicians work closely together to harmonize form and function. With the assistance of 3D-CAD models, you check the result and can integrate your suggestions at any time.

Prototyping is also firmly in the hands of experts who are hard at work incorporating your requests and suggestions into an initial specific product.





Design and function

DESIGN

Using the most modern CAD applications, we design your products, which set new standards in terms of technology and aesthetics. On the basis of the planned details, 3-D views, design studies and volume models emerge, which represent the most realistic state of development progress and enable modifications in line with your wishes at absolutely any time.

Your company-own corporate design is also integrated with our proposals for materials and color. Ultimately we ensure a smooth technical and technological integration while complying with UL, CSA, VDE or TÜV/GS standards. Only when these stages have been fully completed, can the first prototype be produced.



Exemplary results

PRODUCTION AND LOGISTIC

After production release by the customer our sophisticated **logistics concepts** go into operation. Customized planning procedures are integrated and smoothly implemented in our **Supply Chain Management**.

We produce application-specific equipment trolleys in ultra-modern **industrial production procedures**.

And in the production phase our employees guarantee the best possible end product with their long years of experience in parts production, packaging and shipping, supported by our integrated **quality assurance procedures**.

This also includes extensive **packaging expertise**, equipped for global shipping and the toughest environmental conditions.



OEM

INDIVIDUAL SOLUTION

Our standard modules mean the possibilities for unique originals are practically unlimited.

Help us with your requests! Ask us about your original and stand out on the market with your equipment trolley with customized design, harmonized with your company image (CI/CD). Our expert **Design and Technology** Team will be happy to optimally and specifically meet all customerspecific requirements – assuming the appropriate batch sizes.

“Avail of our long years of **experience**, which we use to ergonomically, technically and optimally incorporate our mature and flexibly adjusted product platforms and components into your **individual solution**.”



Our Quality Promise:



Highest quality is
guaranteed

Ergonomically designed products and solutions from a single source

Knürr is worldwide known as competent and reliable partner for holistic control room solutions and mobile equipment carrier. The ergonomically designed products are internationally in use and convince in demanding 24h-Mission-Critical Control Room environment of multiple industrial sectors.

Learn more about Knürr solutions and services at
www.knuerr-consoles.com.

Knürr GmbH

Mariakirchener Straße 38
94424 Arnstorf
Germany
T +49 8723 28 0
F +49 8723 28 138
info@knuerr.com
www.knuerr-consoles.com

knürr
World of control rooms

Notes:

This image shows a full page of blank white paper with horizontal ruling lines. The lines are evenly spaced and run across the width of the page, providing a template for writing or drawing. There are no margins, text, or other markings present.

Notes:

[illegible]

knürr
World of control rooms

Notes:

[illegible]



knuerr-consoles.com | **Knürr GmbH**, Mariakirchener Straße 38, 94424 Arnstorf, Germany ID-Nr. DE 363797731

© 2025 Knürr GmbH. All rights reserved. Knürr® and the Knürr logo are trademarks or registered trademarks of Knürr GmbH. All other names and logos referred to are trade names, trademarks or registered trademarks of their respective owners. While every precaution has been taken to ensure accuracy and completeness herein, Knürr GmbH assumes no responsibility, and disclaims all liability, for damages resulting from use of this information or for any errors or omissions. Specifications are subject to change without notice.

09.991.042.0.000001 • EN • #10065 Version 17.02.2025