

Mobile Equipment Carriers

Knürr SynergyCart® Advanced

Page 29 to 35



Knürr SynergyCart® Advanced Strong points

- **The ergonomical equipment carrier**
 - Mobile, height-adjustable LCD workstation
 - Supports computers, bar code scanners and printers
 - Test trolley in production / workshop
 - Warehouse picking, scanner carts
 - Ideal for automotive and industrial projects where small space-saving trolleys with cable management are required
 - Fully assembled and ready for use
 - Tested according to the latest standards and regulations
 - Stable, attractive base in 2 versions:
 - Synergy Cart Advanced
 - Synergy Cart Advanced MetraLine
- **Characteristics**
 - Flexible height adjustable by gas pressure column - 750-1040 mm
 - Comfortable working in sitting or standing position
 - Easy handling with in the worktop integrated handles
 - Ergonomic lever for safe and comfortable height adjustment
 - Spacious and stable worktop, made of 15 mm HPL solid core material (width 695 mm, depth 570 mm) for loads up to 16kg
 - Either with single or double steering rollers
 - Easy movement on uneven floors or above doorsills through ø 125 mm smooth running castors
 - Fixation by two castors with locking mechanism
 - No scratches on doors, walls and furniture due to integrated plastic bumper caps
 - Simple, individual assembly of accessory components, e.g. drawers and storage shelves on the vertical aluminum profile
 - User-friendly cable management with plenty of space for cables, sockets and transformers



SYN2010



SYN2013

Dimensions in mm: W = Width
 H = Height
 D = Depth
 h = Installation height
 d = Useful depth
 L = Length

HU = Standard height unit, 1 HU = 44,45 mm
 19" = 482,6 mm,
 (ideal for 19" components in acc. with DIN 41494)
 UP = Unit of packaging
 kg = Weight

Conversion: 1 inch = 25,4 mm
 Replace „x“ with the number of your color choice

SynergyCart

Advanced Metra Line

SynergyCart

Advanced

Easy handling

with integrated handholds

Flexible height adjustment

from 750 mm to 1040mm

Spacious desktop

adapted to your project

Keyboard drawer

for secure storage

750 - 1040 mm



SYN20210

Covered cable guiding

with integrated cable duct

Solid base

space for various devices



SYN20211

Ergonomic handle-

for safe and comfortable height adjustment

750 - 1040 mm



SYN20212

Comprehensive range of accessories

Vertical T-Slots for flexible installation

Gas lift column

different models available



SYN20213

Individual Project Solutions – Contact Us!

Many application scenarios demand a project specific solution.

When planning, manufacturing, and assembling your individual requirements, Knürr takes multiple factors into account, including your personal requirements as

well as legal guidelines. Industrial designers and Technicians closely cooperate at our product design department to bring form and function in line. The resulting designs are regularly tested by means of 3D-CAD models and you are welcome to incorporate

your ideas any time. Any required prototypes are manufactured by experts who translate your wishes and ideas into a real product.

Knürr SynergyCart® Advanced

- Base unit in Synergy design
 - Large leg space
 - Double castors in Ø 125mm
- **Finish**
 - .1 RAL 7035, light grey
 - .9 RAL 7021, dark grey
 - **Supply schedule**
 - 1 base unit with gas lift column and aluminum profile cover
 - 4 Double castors (2 lockable)
 - 1 worktop with integrated handles
 - **How supplied**
 - Fully assembled

| W | H | D | d | Order no. | UP |
|---|---|---|---|--------------|--------|
| | | | | 00.705.510.x | 1 unit |



MOB20135

Knürr SynergyCart® Advanced Metra Line

- Large base unit for different equipment like printers
 - Smooth running castors in Ø 125mm
- **Finish**
 - .1 RAL 7035, light grey
 - .9 RAL 7021, dark grey
 - **Supply schedule**
 - 1 base unit with gas lift column and aluminum profile cover
 - 4 castors (2 lockable)
 - 1 worktop with integrated handles
 - **How supplied**
 - Fully assembled

| W | H | D | d | Order no. | UP |
|---|---|---|---|--------------|--------|
| | | | | 00.705.500.x | 1 unit |



MOB20136

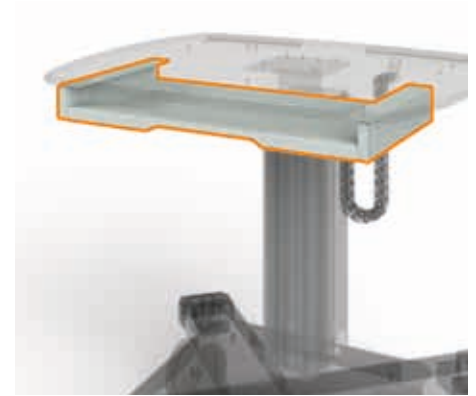
Dimensions in mm: W = Width
 H = Height
 D = Depth
 h = Installation height
 d = Useful depth
 L = Length

HU = Standard height
 unit, 1 HU = 44,45 mm
 19" = 4826 mm,
 (ideal for 19" components
 in acc. with DIN 41494)
 UP = Unit of packaging
 kg = Weight

Conversion: 1 inch = 25,4 mm
 Replace „x“ with the number of your
 color choice

Knürr SynergyCart® Keyboard Drawer

- Creates space on your worktop
 - Legroom is always granted
 - Keyboard drawer latches in closed and extended position
 - Easy retrofit
- **Material / Surface**
 - Sheet steel, powder-coated
 - **Color**
 - RAL7035 light grey
 - **Dimensions**
 - Width: 536 mm
 - Height: 56 mm
 - Depth: 276 mm
- **Max. usable dimensions**
 - Width: 500 mm
 - Height: 45 mm
 - Depth: 218 mm
 - **Supply schedule**
 - 1 Keyboard drawer
 - Mounting material
 - **How supplied**
 - pre-assembled



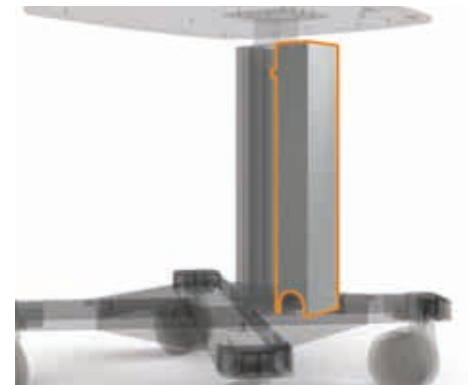
MOB20138

| Model | Order no. | UP |
|-----------------|--------------|--------|
| Keyboard drawer | 00.705.550.1 | 1 unit |

Knürr SynergyCart® Cable Duct

- Toolless installation
 - Clean cabling
 - Ready for installation of Knürr DI-Strip PDU's (4 sockets)
- **Material / Surface**
 - RAL 9006 White aluminum
 - **Supply schedule**
 - 1 Cable Duct

| Model | Order no. | UP |
|------------|--------------|--------|
| Cable Duct | 00.705.555.9 | 1 unit |



MOB20139

Knürr SynergyCart® Cable Chain

- Non pinch and anti tangle cable guiding
- Defined cable radii
- **Material / Surface**
 - Plastic black
- **Supply schedule**
 - 1 Cable Chain
- **Note**
 - Cable chain installation works only together with cable duct

| Model | Order no. | UP |
|-------------|--------------|--------|
| Cable Chain | 00.705.560.9 | 1 unit |

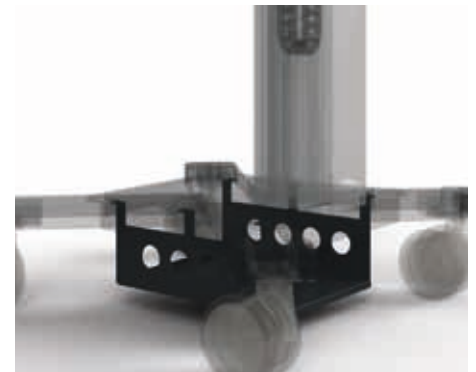


MOB20140

Knürr SynergyCart® Transformer Tray

- Low Center of Gravity
- Securely holds transformers, batteries etc.
- Lateral and bottom cooling vents
- **Material / Surface**
 - .1: RAL 7035 light grey
 - .9: RAL 7021 dark grey
- **Dimensions (usable)**
 - Width 290 mm,
 - Depth 320 mm
 - Height 104 mm
- **Supply schedule**
 - 1 Transformer Tray

| Model | Order no. | UP |
|----------------------------------------|--------------|--------|
| Knürr SynergyCart® Advanced Metra Line | 00.705.565.x | 1 unit |
| Knürr SynergyCart® Advanced | 00.705.570.x | 1 unit |



MOB20141

Knürr SynergyCart® Holder for Tower PC

- Adjustable clamp for fixation of mini-tower PC's
- **Material**
 - Sheet steel, powder-coated
- **Finish**
 - .1: RAL 7035 light gray
 - .9: RAL 7021 dark grey
- **Dimensions**
 - Adjustable width, 160 - 220 mm
 - Height-variable with T-slot-mounting
- **Supply schedule**
 - 1 PC fixation kit
 - Mounting material

| W | Order no. | UP |
|-----------|--------------|--------|
| 160 - 220 | 00.705.236.x | 1 unit |



syn20024

Dimensions in mm: W = Width
 H = Height
 D = Depth
 h = Installation height
 d = Useful depth
 L = Length

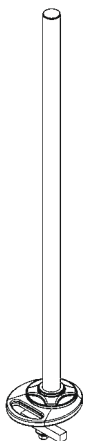
HU = Standard height unit, 1HU = 44.45 mm
 19" = 482.6 mm, (ideal for 19" components in acc. with DIN 41494)
 UP = Unit of packaging
 kg = Weight

Conversion: 1 inch = 25.4 mm
 Replace „x“ with the number of your color choice

Monitor Mounts - Tube Mount System

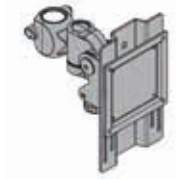
- Flat screen mount for flat screens with VESA bracket 75 and 100 mm
- With integrated cable routing
- **Supply schedule**
 - 1x flat screen mount
 - Type E, F, G with accompanying height compensation plate
 - Mounting material
- **How supplied**
 - Flat-packed kit
- **Type D-G**
 - For mounting on Knürr top screen mounting columns for custom depth and height adjustment
 - Freely selectable mounting position on tabletop thanks to practical clamping system
- **Material/Surface Type D-G**
 - Swivel arms: die-cast aluminum, powder-coated, RAL 9006 White aluminium
 - Adapter: steel panel, powder-coated, smooth, RAL 9006 White aluminium
 - Covers on screen arms: plastic, clear

| Model | Height compensation plate | Capacity | Order-no. | UP |
|-----------------------------------------------------|---------------------------|----------|---------------------|--------|
| Type D, for top screen mounting column (short) | | 15 kg | 01.316.250.7 | 1 unit |
| Type E, for top screen mounting column (150 mm) | • | 15 kg | 01.316.251.7 | 1 unit |
| Type F, for top screen mounting column (200 mm) | • | 15 kg | 01.316.252.7 | 1 unit |
| Type G, for top screen mounting column (150x200 mm) | • | 15 kg | 01.316.253.7 | 1 unit |
| <hr/> | | | | |
| Tube mount with screw fitting (H400) | | | 01.316.233.9 | 1 unit |
| Tube mount with screw fitting (H700) | | | 01.316.234.9 | 1 unit |

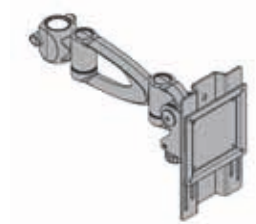


ACC20029

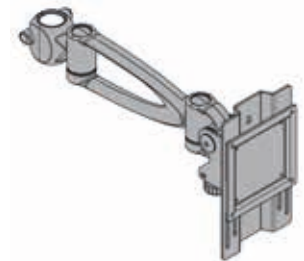
Pipe bracket for screw fitting



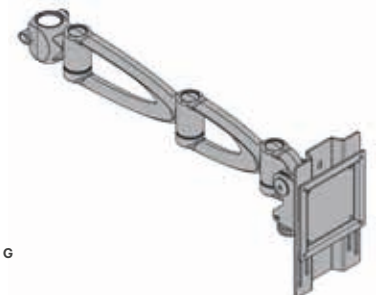
Type D



Type E



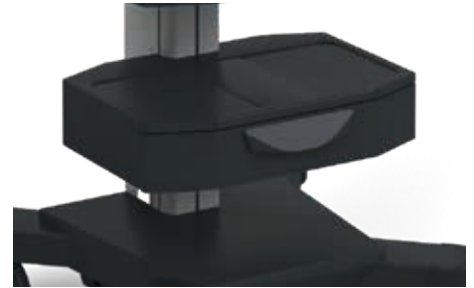
Type F



Type G

Knürr SynergyCart® Drawer

- Can be ergonomically mounted at any height, stepless
 - With drawer safety catch against unintentional opening
- **Material**
 - **Main unit and drawer:**
 - Sheet steel, powder-coated
 - **Handle:**
 - Plastic, black
 - **Finish**
 - .1: RAL 7035 light grey
 - .9: RAL 7021 dark grey
 - **Dimensions**
 - width, 505 mm; depth, 350 mm; height, 110 mm
 - drawer width, 425 mm; depth, 265 mm; height, 90mm
 - **Load rating**
 - Housing, 10 kg; extension, 2 kg
 - **Supply schedule**
 - 1 drawer module
 - Mounting material



MOB20137

| W | H | D | Order no. | UP |
|-----|-----|-----|--------------|--------|
| 500 | 110 | 300 | 00.705.275.x | 1 unit |

Knürr SynergyCart® Shelf

- Can be ergonomically mounted at any height, stepless
 - Torsion-free and stable
 - With recessed surface to prevent sliding and for anti-slip mats
- **Material**
 - Sheet steel, powder-coated
 - **Finish**
 - .1: RAL 7035 light grey
 - .9: RAL 7021 dark grey
 - **Load rating**
 - 15 kg
 - **Supply schedule**
 - 1 Shelf
 - Mounting material



MOB20137

| W | T | Order no. | UP |
|-----|-----|--------------|--------|
| 500 | 300 | 00.705.225.x | 1 unit |

Dimensions in mm: W = Width
 H = Height
 D = Depth
 h = Installation height
 d = Useful depth
 L = Length

HU = Standard height unit, 1 HU = 44,45 mm
 19" = 482,6 mm,
 (ideal for 19" components in acc. with DIN 41494)
 UP = Unit of packaging
 kg = Weight

Conversion: 1 inch = 25,4 mm
 Replace „x“ with the number of your color choice